



EDENCRAFT 565 Runabout

So... you want to get serious about boating?



The 565 Runabout is an excellent size for ease of towing and launching, with all of the safety and strength of our larger boats. The hull has a long, proven history of excellent rough water performance, demonstrating reliability and seaworthiness. The one thing you will notice is the 565 Runabout is a sports boat in all the traditional time proven aspects. This boat is no toy. It's built to the exact same high standards of all Edencraft models.



The 565 Runabout has outstanding offshore performance and has established an excellent reputation. That's because we build every one of our boats to a standard, not a price. With our 20 years experience in the fishing and boating industry, we know the demands of the sea. Edencrafts are a proven product and a performance boat designed, engineered and manufactured to meet the demanding needs of all our customers.

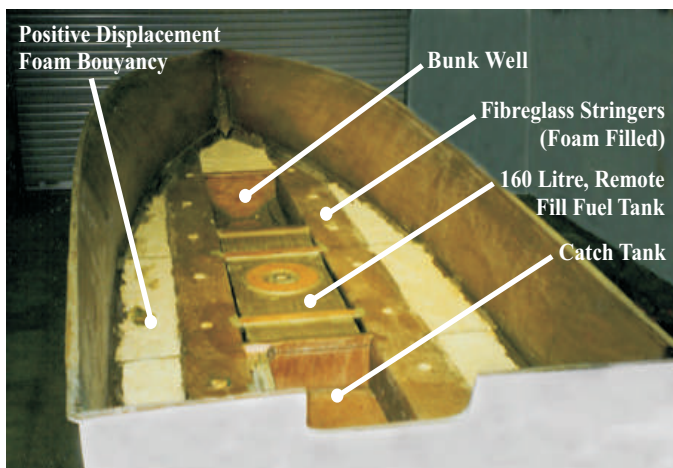
So... If you're serious about your boat, the 565 Runabout is a serious boat! Packed with all the features to provide years of boating enjoyment.

Have you been wondering about our claims of superior strength, safety and durability? These claims are primarily based on the fact that all of our boats are built to the very stringent standards laid down by Marine Safety Victoria. Their standards of vessel construction are very specific in many details; prescribing the exact amounts of fibreglass and resin to be used in the construction of the hull. The grade and thickness of the material used in the construction of the fuel tank. The type, quality and quantity of positive displacement foam buoyancy. The quantity and type of materials used to reinforce all seams, sealing of fuel tanks, and positive sealing of flotation chambers.

Our boats have up to 40% more resin and fibreglass in the construction of the hull as compared to most recreational boats of the same size. The highest quality resins are used exclusively along with biaxial cloth, woven roving and chopped strand in construction of the hull and upper deck. Our fuel tanks are constructed of 4 mm thick, 5083, marine grade alloy, which is then sealed in fibreglass to prevent any possibility of corrosion. The tank is then secured in place. Buoyancy chambers are sealed then filled with fuel resistant fire retardant closed cell foam as per U.S.L code. Our upper decks also have sealed, positive displacement foam flotation chambers. The stringers are molded fibreglass for maximum strength and durability. The stringers also serve as buoyancy chambers and are filled with the same positive displacement buoyancy foam.

Every EDENCRAFT has its own set of statistics regarding the amount of resin used, the temperature and humidity at the time of fibre glassing. Additionally each fuel tank has a serial number; we also maintain records of the batch numbers for all raw materials.

We use marine grade plywood which is fibreglassed on all sides then sealed into place with all seams reinforced with hand laid fibreglass incorporating biaxial cloth and woven roving. The entire hull then becomes a solid unit, ensuring maximum rigidity and strength able to maintain its structural integrity under the most adverse conditions.





565 RUNABOUT

STANDARD FITTINGS

Single Tone Gelcoat Hull & Deck
1 x Heavy Duty Bow Eye
Bow Roller
Cross Bollard
Anchor Well
Deck Hatch
Windscreen

160L Underfloor Fuel Tank with Deck
Filler & Breather
2 x Deck Cleats
2 x Heavy Duty Stern Tow Eyes
Full Length Cockpit Side Pockets
Large Transom Drain Bung
Positive Foam Buoyancy
Navigation Lights

SPECIFICATIONS

Centre length5.65 M
Max beam2.2 M
Hull dead rise22°
Hull draft0.33 M
Cockpit area5.037 M²
Fuel tank capacity160 L
Hull dry weight approx800 Kg
Outboard power (Max).....1 x 175 HP

OPTIONS

Two Tone Gelcoat Hull
Slab Side Gelcoat Hull
Bow Rail
Bunk Well
Lift Out Dive Door
Removable Stainless Steel Seat Pedestal
Rocket Launcher (Folding) with 6 Rod Holders,
Top & Side Accessory Mounts
- Bimini
- Front Clears with 2 x Zips
- Side Clears
Seastar Hydraulic Steering & Steering Wheel
Seat Slide
Seat with Edencraft Embroidered
Shrink Wrap
Stainless Steel Pedestal Mounting Plate
Stainless Steel Rod Holders
Windscreen Grab Rail
All makes & hp sizes of engines available
Trailer available

We're so confident we cover the hull, deck, floor, fuel system and transom with a **FULL TEN YEAR WARRANTY** against defects in material or workmanship.

EDENCRAFT BOATS P/L
www.edencraft.com.au
Email: sales@edencraft.com.au