



EDENCRAFT 6 METRE OFFSHORE

The original and still the best



Based on the original V19 hull, the 6 METRE OFFSHORE has outstanding offshore performance, superb handling and a soft ride as well as being stable at rest. It has exceptional ability in arduous conditions as well as extremely high structural integrity with excellent manoeuvrability. It is superior to any similar sized hull, having gained an excellent reputation with rescue organizations, government departments, Police, serious offshore game fishermen, abalone divers and other commercial operators. The legend lives on in this very serious boat.

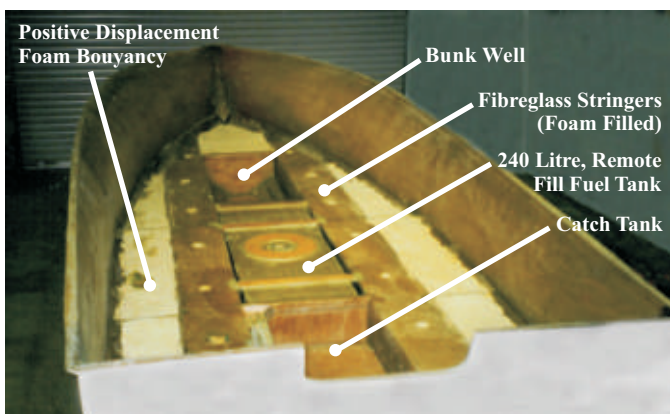


Have you been wondering about our claims of superior strength, safety and durability? These claims are primarily based on the fact that all of our boats are built to the very stringent standards laid down by Marine Safety Victoria. Their standards of vessel construction are very specific in many details; prescribing the exact amounts of fibreglass and resin to be used in the construction of the hull. The grade and thickness of the material used in the construction of the fuel tank. The type, quality and quantity of positive displacement foam buoyancy. The quantity and type of materials used to reinforce all seams, sealing of fuel tanks, and positive sealing of flotation chambers.

Our boats have up to 40% more resin and fibreglass in the construction of the hull as compared to most recreational boats of the same size. The highest quality resins are used exclusively along with biaxial cloth, woven roving and chopped strand in construction of the hull and upper deck. Our fuel tanks are constructed of 4 mm thick, 5083, marine grade alloy, which is then sealed in fibreglass to prevent any possibility of corrosion. The tank is then secured in place. Buoyancy chambers are sealed then filled with fuel resistant fire retardant closed cell foam as per U.S.L code. Our upper decks also have sealed, positive displacement foam flotation chambers. The stringers are molded fibreglass for maximum strength and durability. The stringers also serve as buoyancy chambers and are filled with the same positive displacement buoyancy foam.

Every EDENCRAFT has its own set of statistics regarding the amount of resin used, the temperature and humidity at the time of fibre glassing. Additionally each fuel tank has a serial number; we also maintain records of the batch numbers for all raw materials.

We use marine grade plywood which is fibre glassed on all sides then sealed into place with all seams reinforced with hand laid fibreglass incorporating biaxial cloth and woven roving. The entire hull then becomes a solid unit, ensuring maximum rigidity and strength able to maintain its structural integrity under the most adverse conditions.



You keep hearing about "Survey Standards." What exactly does that mean and what implications does it have for you? Simply, if you have requirements to use a boat in a commercial application EDENCRAFT boats can be put into "Survey" by paying the appropriate registration fee and obtaining the required additional safety gear. The boat can then be used in a commercial application, referred to as "being in survey".

Even though every EDENCRAFT is built to the exact same high standards it is not necessary for you to elect to have the boat registered for Marine Safety Victoria survey compliance. Should you wish to have the boat eligible to be put into survey immediately or sometime in the future, you will need to make the decision when you place your order and pay the required fee. We will then submit the necessary paperwork and obtain the official serial number from Marine Safety Victoria. That number then becomes an integral part of the hull at the time of construction.

Either way you will have a boat which has been built to commercial standards. We're so confident we cover the hull, deck, floor, fuel system and transom with a **FULL TEN YEAR WARRANTY** against defects in material or workmanship.

OPTIONS

There are many options you may have with your 6 Metre OFFSHORE. Discuss them with your dealer.



Above: Bench Seat with cushion, storage & tackle box.

Top Left: Pedestals & Seats.

Below: Two lockers in the transom, starboard for batteries, port extra storage. Shows window for live bait tank (optional).

Above: Yellow slab side with all standard fittings and optional bow rail.

Above: black slab side with T-top, 6 rod holders, bimini, front & side clears and stainless steel bow rail.



Below: Lift out Dive Door. and black slab side gelcoat hull.



Below: Seats, Stepped Seat Boxes With Storage Compartments.





6 METRE OFFSHORE

STANDARD FITTINGS

Single Tone Gelcoat Hull & Deck
2 x Heavy Duty Bow Eyes
Bow Roller
Anchor Well with Hatch
Windscreen or Fibreglass Wave Breaker
240L Underfloor Fuel Tank with Deck
 Filler & Breather
4 x Deck Cleats
2 x Heavy Duty Stern Tow Eyes
Full Length Cockpit Side Pockets

Cabin Side Stowage Shelves
Large Transom Drain Bung
Positive Foam Buoyancy
Dash Grab Rail
Glove Box
Lock Up Cabin
Built to Marine Safety Victoria Survey
 Specs - USL Code
Navigation Lights

SPECIFICATIONS

Centre length6.2 M
Max beam2.4 M
Hull dead rise22°
Hull draft0.35 M
Cockpit area6 M²
Fuel tank capacity240 L
Hull dry weight approx1100 Kg
Outboard power (Max)..... 1 x 250 HP
Or2 x 130 HP



OK, how serious are you? This minnow weighed in at 509 kgs. Don't the guys look pleased they got him in the boat? Tiger shark landed on 37 kg line.

EDENCRAFT BOATS P/L

www.edencraft.com.au

Email: sales@edencraft.com.au

OPTIONS

Two Tone Gelcoat Hull
Slab Side Gelcoat Hull
Anchor Winch (Sarca Anchor, Rope & Chain)
Bait Tank with Window
Bow Rail
Bunk Cushions
Bunk Well
Catch Tank
Fibreglass Bench Seat with Cushion
Fibreglass Single Seat Box
Fibreglass Stepped Seat Box
Game Chair Base
Lift Out Dive Door
MSV Survey Fees
Removable Stainless Steel Seat Pedestal
Rocket Launcher (Folding) with 6 Rod Holders,
Top & Side Accessory Mounts
 - Bimini
 - Front Clears with 2 x Zips
 - Side Clears
Seastar Hydraulic Steering & Steering Wheel
Seat Slide
Seat with Edencraft Embroidered
Shrink Wrap
Stainless Steel Pedestal Mounting Plate
Stainless Steel Rod Holders
Tee-Top (Folding) with 6 Rod Holders, Top & Side
Accessory Mounts
 - Bimini
 - Front Clears with 2 x Zips
 - Side Clears
Wave Breaker - Fibreglass
Wave Breaker with Windows
Wind Deflector
Windscreen Grab Rail
All makes & hp sizes of engines available
Trailer available